

Sample: 1809CH0045.0165

Strain: Pineberry

Batch#: ; Batch Size: - grams

Sample Received: 09/05/2018; Report Created: 09/10/2018; Expires: 09/10/2019

Harvest/Production Date:

Sampling: Random; Environment: Room Temp

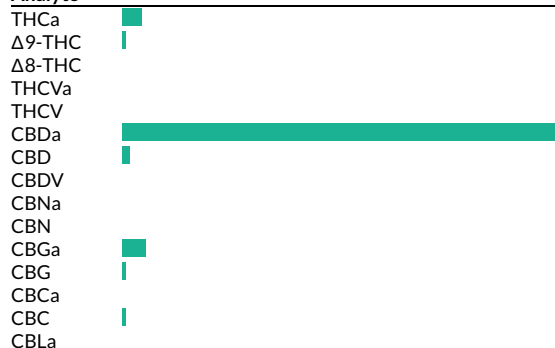
OF Pineberry

Other, Industrial Hemp

Harvest Process Lot: ; METRC Batch: ; METRC Sample:



Analyte



Cannabinoids

228 HPLC3 20180907-1
09/07/2018

1 Serving = , g
servings/container

Pass

0.04%

Δ9-THC

17.94%

Total CBD** (Calculated
Decarboxylated Potential)

22.53%

Total Cannabinoids Analyzed

Analyte	LOQ	Mass	Mass
	mg/g	%	mg/g
THCa	0.2	0.87	8.7
Δ9-THC	0.2	0.04	0.4
Δ8-THC	0.2	<LOQ	<LOQ
THCVa	0.2	<LOQ	<LOQ
THCV	0.2	<LOQ	<LOQ
CBDa	0.2	20.05	200.5
CBD	0.2	0.36	3.6
CBDV	0.2	<LOQ	<LOQ
CBNa	0.2	<LOQ	<LOQ
CBN	0.2	<LOQ	<LOQ
CBGa	0.2	1.02	10.2
CBG	0.2	0.11	1.1
CBCa	0.2	<LOQ	<LOQ
CBC	0.2	0.08	0.8
CBLa	0.2	<LOQ	<LOQ
Total		22.53	225.3

*Total THC = THCa * 0.877 + d9-THC. **Total CBD = CBDa * 0.877 + CBD. LOQ = Limit of Quantification; NR = Not Reported; ND = Not Detected

Sample: 1809CH0045.0165

Strain: Pineberry

Batch#: ; Batch Size: - grams

Sample Received: 09/05/2018; Report Created: 09/10/2018; Expires: 09/10/2019

Harvest/Production Date:

Sampling: Random; Environment: Room Temp

OF Pineberry

Other, Industrial Hemp

Harvest Process Lot: ; METRC Batch: ; METRC Sample:

Terpenes

329 GCFID1 20180907-2

09/07/2018

Analyte	Mass		LOQ		Analyte	Mass		LOQ
	%	mg/g	%			%	mg/g	%
α-Pinene	0.13	1.3	0.02	■	Isoborneol	<LOQ	<LOQ	0.02
Camphene	<LOQ	<LOQ	0.02		Borneol	<LOQ	<LOQ	0.02
Sabinene	<LOQ	<LOQ	0.02		Hexahydro Thymol	<LOQ	<LOQ	0.02
(-) -β-Pinene	0.07	0.7	0.02	■	α-Terpineol	0.03	0.3	0.02
β-Myrcene	1.03	10.3	0.02	■	γ-Terpineol	<LOQ	<LOQ	0.02
α-Phellandrene	<LOQ	<LOQ	0.02		Nerol	<LOQ	<LOQ	0.02
δ-3-Carene	<LOQ	<LOQ	0.02		Pulegone	<LOQ	<LOQ	0.02
α-Terpinene	<LOQ	<LOQ	0.02		Geraniol	<LOQ	<LOQ	0.02
p-Isopropyltoluene	<LOQ	<LOQ	0.02		Farnesene	<LOQ	<LOQ	0.02
δ-Limonene	0.11	1.1	0.02	■	α-Cedrene	<LOQ	<LOQ	0.02
Eucalyptol	<LOQ	<LOQ	0.02		β-Caryophyllene	0.30	3.0	0.02
Ocimene 1	<LOQ	<LOQ	0.02		α-Humulene	0.09	0.9	0.02
Ocimene 2	0.08	0.8	0.02	■	Valencene	0.05	0.5	0.02
γ-Terpinene	<LOQ	<LOQ	0.02		Geranyl Acetate	0.46	4.6	0.02
Sabinene Hydrate	<LOQ	<LOQ	0.02		cis-Nerolidol	0.10	1.0	0.02
Fenchone	<LOQ	<LOQ	0.02		β-Nerolidol	0.09	0.9	0.02
Terpinolene	<LOQ	<LOQ	0.02		trans-Nerolidol	<LOQ	<LOQ	0.02
Linalool	0.03	0.3	0.02	■	Caryophyllene Oxide	<LOQ	<LOQ	0.02
Endo-Fenchyl Alcohol	<LOQ	<LOQ	0.02		(-) -Guaiol	0.03	0.3	0.02
Camphor	<LOQ	<LOQ	0.02		Cedrol	<LOQ	<LOQ	0.02
(-) -Isopulegol	<LOQ	<LOQ	0.02		(-) -α-Bisabolol	0.13	1.3	0.02

Primary Aromas



Method: GC-FID; based on dry weight; LOQ = Limit of Quantification; NR = Not Reported; ND = Not Detected

Certificate of Analysis

Informational Use Only - Not For Regulatory Use

Sample: 1809CH0045.0165

Strain: Pineberry

Batch#: ; Batch Size: - grams

Sample Received: 09/05/2018; Report Created: 09/10/2018; Expires: 09/10/2019

Harvest/Production Date:

Sampling: Random; Environment: Room Temp

OF Pineberry

Other, Industrial Hemp

Harvest Process Lot: ; METRC Batch: ; METRC Sample:



Microbials

1.0047

09/08/2018

Complete

Analyte	Limit	Units	Status
Yeast & Mold	CFU/g	CFU/g 5872	Tested

Method: AOAC Method 997.02 & 990.12; Based on wet weight; CFU = Colony Forming Unit; TNC = Too Numerous to Count; NR = Not Reported; ND = Not Detected

Sample: 1809CH0045.0165

Strain: Pineberry

Batch#: ; Batch Size: - grams

Sample Received: 09/05/2018; Report Created: 09/10/2018; Expires: 09/10/2019

Harvest/Production Date:

Sampling: Random; Environment: Room Temp

OF Pineberry

Other, Industrial Hemp

Harvest Process Lot: ; METRC Batch: ; METRC Sample:

Quality Control Data

Analytical Batch ID	QC Sample ID	Assay Name	QC Category Name
228 HPLC3 20180907-1	PMB09051801F	Cannabinoids	Blank

QC Notes

None

Compounds	Blank Result	Blank Max % (LOQ)	Blank Result %	Notes
THCa	0	0.05	<LOQ	-
Δ9-THC	0	0.05	<LOQ	-
CBDa	0	0.05	<LOQ	-
CBD	0	0.05	<LOQ	-

Sample: 1809CH0045.0165

Strain: Pineberry

Batch#: ; Batch Size: - grams

Sample Received: 09/05/2018; Report Created: 09/10/2018; Expires: 09/10/2019

Harvest/Production Date:

Sampling: Random; Environment: Room Temp

OF Pineberry

Other, Industrial Hemp

Harvest Process Lot: ; METRC Batch: ; METRC Sample:



Quality Control Data

Analytical Batch ID	QC Sample ID	Assay Name	QC Category Name
228 HPLC3 20180907-1	PLCS09051801F	Cannabinoids	Lab Control Sample

QC Notes

None

Compounds	LCS Result (%)	LCS Spike	LCS % Rec	% Limits	Notes
THCa	6.63	6.57	100.91	70 - 130	-
Δ9-THC	6.82	7.32	93.17	70 - 130	-
CBDa	2.32	2.19	105.94	70 - 130	-
CBD	2.33	2.3	101.3	57 - 143	-



Sample: 1809CH0045.0165

Strain: Pineberry

Batch#: ; Batch Size: - grams

Sample Received: 09/05/2018; Report Created: 09/10/2018; Expires: 09/10/2019

Harvest/Production Date:

Sampling: Random; Environment: Room Temp

OF Pineberry

Other, Industrial Hemp

Harvest Process Lot: ; METRC Batch: ; METRC Sample:

Quality Control Data

Analytical Batch ID	QC Sample ID	Assay Name	QC Category Name
228 HPLC3 20180907-1	PMS09051801F	Cannabinoids	Spike

QC Notes

None

Compounds	LOQ	Matrix Duplicate % RPD	Duplicate RPD Notes	Matrix Spike % Rec	% Limits	Notes
THCa	0.02	15.38	<20	112	70 - 130	-
Δ9-THC	0.02	<LOQ	<LOQ	100	70 - 130	-
CBDa	0.02	3.4	<20	176	70 - 130	Above Limit Range
CBD	0.02	8.7	<20	106	70 - 130	-